



ЖУКОВСКИЙ
МЕЖДУНАРОДНОЕ
АЭРОПОРТ



ZHUKOVSKY

INTERNATIONAL AIRPORT | CARGO

WELCOME TO ZHUKOVSKY INTERNATIONAL AIRPORT



**Joint Stock Company
“ZHUKOVSKY INTERNATIONAL AIRPORT
CARGO”**

is a single cargo operator for ground handling of cargo and mail in the dynamically developing International Airport Zhukovsky



Currently

the project for building a modern multimodal warehouse complex, designed to handle and store all categories of domestic and international cargo shipments is in progress



We are pleased to offer you

a wide range of airport infrastructure of the warehouse and customs terminal



Our main principles are

respect for our partners, usage of modern technologies of business management, providing competent solutions and high standards in the field of ground handling operation, security and logistics



Our work

is based on a client-oriented approach to business dealing, which requires the fullest satisfaction of the requirements of consignors, consignees and airlines

We will be glad to see you among our friends and partners!

JSC “ZHUKOVSKY INTERNATIONAL AIRPORT CARGO”

established in 2016



International holding company, joint venture of
JSC “RAMPORT AERO” (Zhukovsky International
Airport) and Greenway International (UAE)

51%

RAMPORT AERO

49%

Greenway international

Our tasks:

01

Creation of a high-tech infrastructure

to meet the growing needs of Zhukovsky International Airport in the development of logistics services

02

Investments in the maintenance and reconstruction

of Zhukovsky International Airport infrastructure in accordance with the business development strategy

03

Building of a modern cargo complex with

complex with a temporary (customs) storage warehouse, an increase of parking spaces for aircraft and modernization of taxiways

04

Ensuring leading positions in the market

by providing high-tech and unique world-class services in the field of logistics solutions

FEATURES

OF PRODUCTION AND LOGISTICS

INFRASTRUCTURE:



Transport infrastructure

cargo terminal is located 23 kilometers from Moscow



A unique runway

with the ability to receive any type of aircraft



Logistics infrastructure

warehouses, customs terminal, production and office area



High-tech warehouse complex

meets all requirements and standards





The cargo terminal infrastructure

allows to fulfill the requirements of efficient and safe storage and transportation of all categories of cargo



The designed capacity of JSC

“ZIA CARGO” is

100 000

tons of cargo per year

250

tons of cargo per day

Implementation dates:



Commissioning

August 2018



Obtaining a temporary (customs) storage warehouse license

August-September 2018



Obtaining a license for dangerous goods, weapons, etc.

August-September 2018

5400 meters

ZIA CARGO



Unique infrastructure

The logistics complex of JSC "ZIA CARGO" is located in the heart of the Russian aviation industry - the city of Zhukovsky. A non-class airfield with the longest runway in Europe allows to receive and service any type of passenger and cargo aircraft without restricting the take-off weight. The favorable location offers great opportunities for increasing the production capacity: the growth of warehouse space and the development of logistics solutions.

Zhukovsky International Airport is:



The main runway with a monolithic asphalt-concrete cover has a length of 5400 meters



Dedicated air zone



Convenient approach scheme and short taxiing time



High level of priority for cargo operations



The unique hub model of route network



Intersection of transport highways makes it possible to realize the effective development of intermodal communication

The transport and logistics complex



is located in the airport's controlled area and has a direct access to the apron and runway



The terminal's capacity per day - 250 tons



Providing round-the-clock operation of the terminal (24/7)

Features:

- Availability of own parking spaces for cargo aircraft
- Availability of all necessary equipment for mail and cargo maintenance
- The possibility of constructing an effective logistics due to the location on the main transport highway "M5 Route Ural" and proximity to the largest industrial parks and logistics centers

ZHUKOVSKY INTERNATIONAL AIRPORT

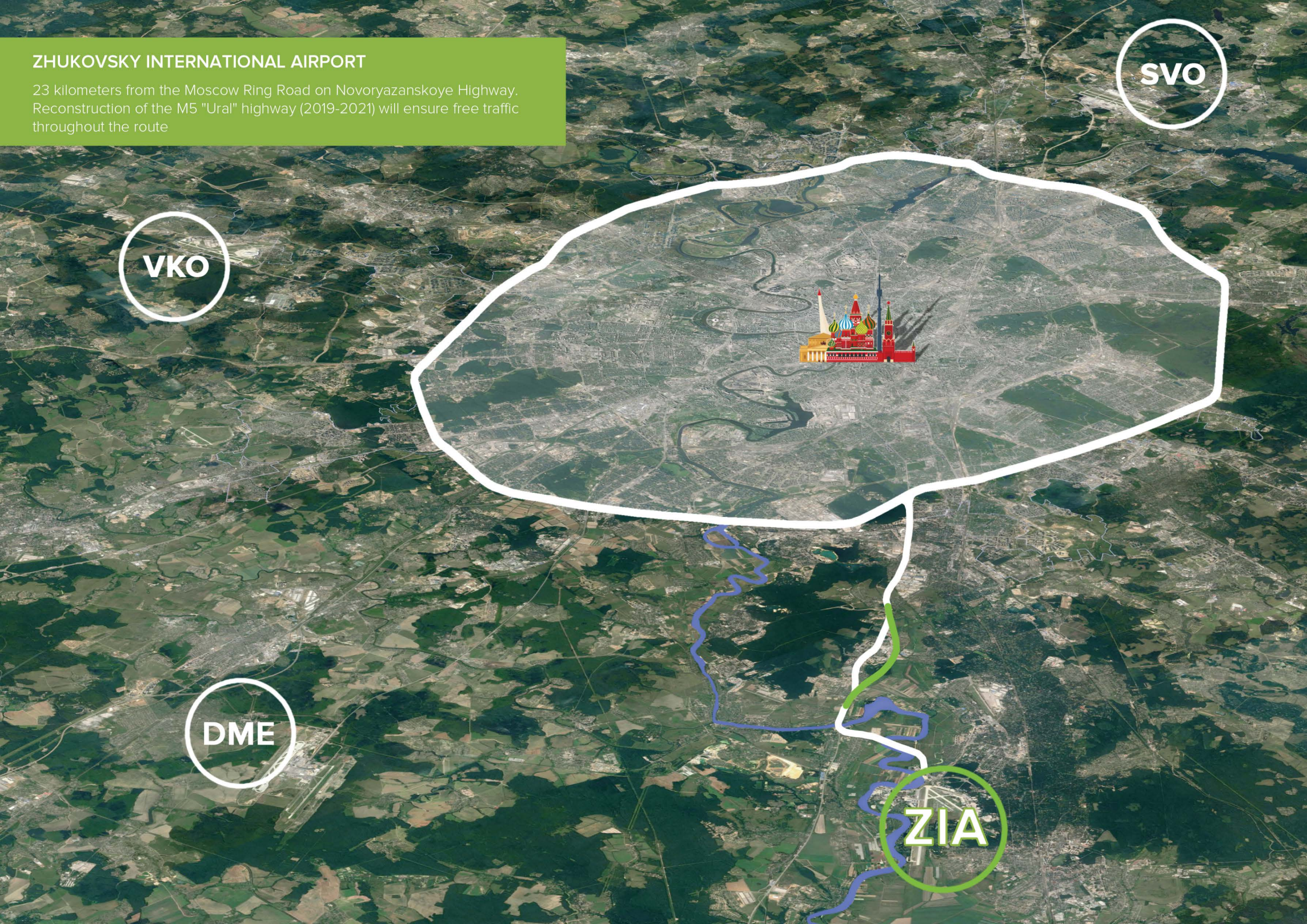
23 kilometers from the Moscow Ring Road on Novoryazanskoye Highway.
Reconstruction of the M5 "Ural" highway (2019-2021) will ensure free traffic
throughout the route

SVO

VKO

DME

ZIA





**Logistic park
"Tomilino"**

LOGISTIC CENTERS

South-east of Moscow region

is economically developed region with rapidly progressing/expanding logistic network. Availability of modern warehouse infrastructure makes it possible to use the capability of JSC "ZIA CARGO" with minimum transport costs

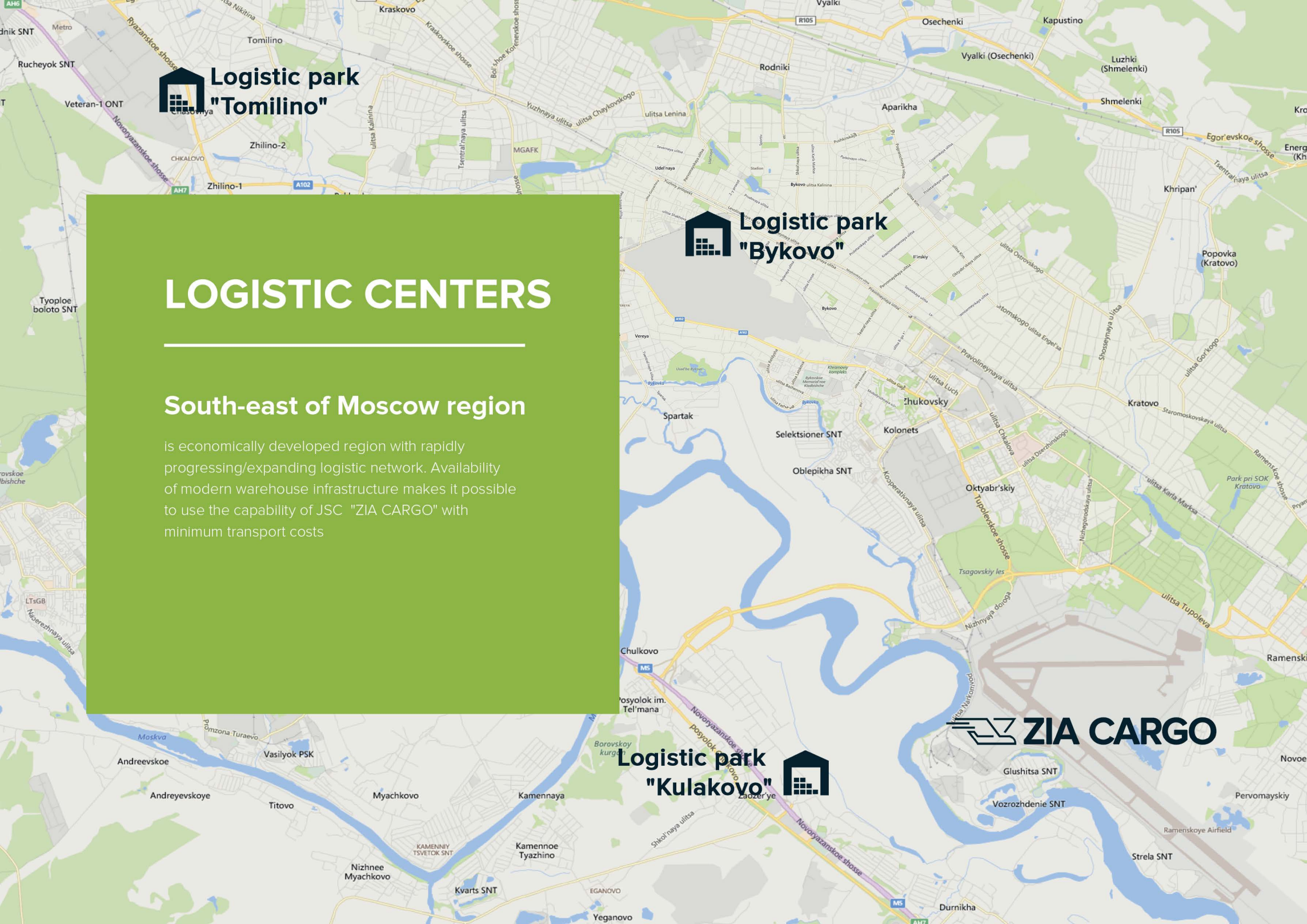


**Logistic park
"Bykovo"**



ZIA CARGO

**Logistic park
"Kulakovo"**





The apron for parking cargo aircrafts

As part of the project, it is planned to carry out the reconstruction and building of a separate aircraft apron for cargo aircraft parking

Work performance: 2018

Features:



The total area of the cargo terminal apron

82000 M²



Simultaneous service of 4 cargo aircraft of the Boeing 747 type

Cargo terminal

The four-storeyed building of JSC “ZIA CARGO” logistic complex includes warehouse and office areas

The infrastructure of the terminal allows handling air cargo and mail round-the-clock, carrying out customs clearance of export and import goods in accordance with the rules and the current customs legislation

Characteristic:

9200 sq. m

The area of the terminal



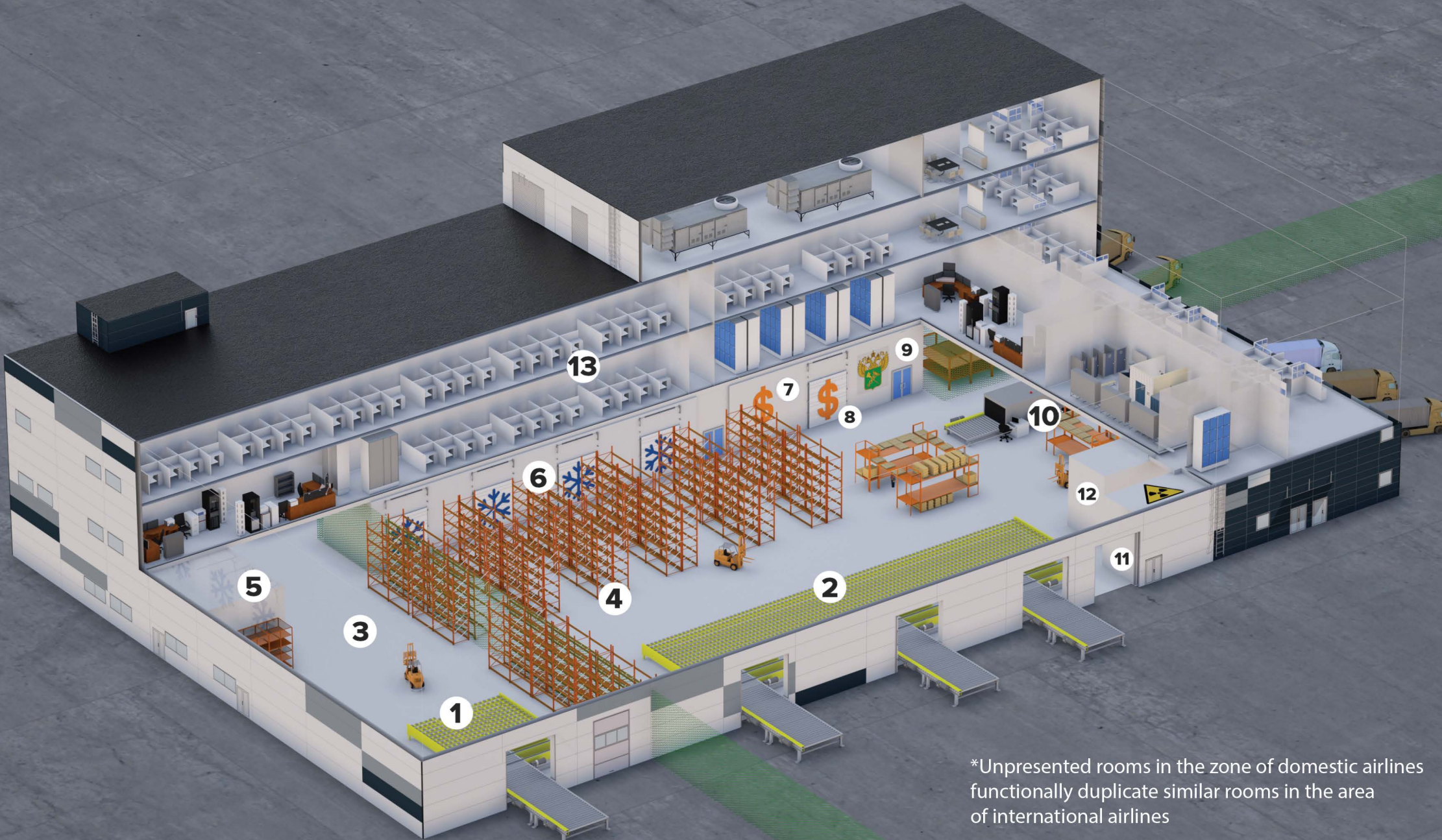
24-hour operation of the cargo terminal



The throughput capacity of the warehouse is 200 tons per day



Ability to handle any type of cargo



*Unpresented rooms in the zone of domestic airlines functionally duplicate similar rooms in the area of international airlines

DOMESTIC AIR LINES

- 1 Loading and unloading area on the side of the apron
- 3 Shelving storage area
- 5 Cold rooms - 3 pcs.
Volume: 500 cbm
Temperature: +5, -5, -18 °C
- 7 Valuable cargo storage

INTERNATIONAL AIR LINES

- 2 Loading and unloading area on the side of the apron
- 4 Shelving storage area
- 6 Cold rooms - 3 pcs.
Volume: 700 cbm
Temperature: +5, -5, -18 °C
- 8 Valuable cargo storage
- 9 Customs control group
- 10 Loading and unloading vehicles
- 11 Storage of radioactive cargo
- 12 Living animal zone
- 13 Office rooms

Capabilities:

- Storage of general cargo
- Service of import and export cargo
- Storage goods of category VUN
- Storage and handling of heavy and bulky cargo
- Service of live animals
- Storage and handling of dangerous goods

The project provides for:



Installation of an automated cargo handling and storage system (ETV)



Work of veterinary and phytosanitary control posts



Electronic data interchange and interaction with customs authorities



Provision of a modern parcels tracking service, services of the cargo accounting and sending status messages electronic system



Automobile warehouse of temporary (customs) storage



STATE CONTROL AUTHORITY



Spaces of all government services involved in the organization of the business process are located in the office area of the terminal

Qualified personnel and full equipment with the necessary software and hardware allow to perform customs clearance of cargo and other tasks quickly and efficiently



Constant air multilateral checkpoint through the state border of the Russian Federation is working round the clock

On the territory are located:

01

Federal
Customs Service

02

Veterinary and
phytosanitary service

03

Russian Federal Consumer
Rights Protection and Human
Health Control Service

To services of clients:

- Support, insurance and consulting
- Accelerated processing and customs clearance of express freight
- Online services
- Auto Delivery Services
- Cargo handling without dismantling of containers and pallets
- Accelerated delivery
- Automobile warehouse of temporary (customs) storage
- Services of the agent for the sale of freight traffic
- Registration, storage and examination of radioactive cargoes

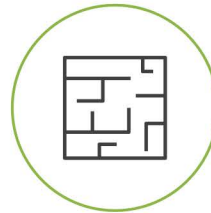


OFFICE AREA

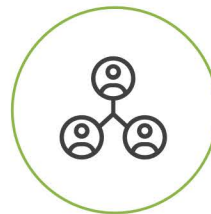


We introduced a comfortable office area, organized with all modern requirements for business class rooms to ensure the most comfortable conditions for work processes

There are offices of JSC "ZIA CARGO" administration and ground maintenance services, meeting rooms, rooms of state control authorities and back rooms at the 2, 3 and 4 floors of the cargo terminal



The areas on the 3rd floor are combined into free-planning rooms and can be arranged in full accordance with your ideas about comfortable working environment



Consolidation of participants of the business process will help to minimize costs and will allow to settle any issues effectively

1100 m²
available for rent



Zhukovsky
international airport



Active directions

Planned for opening (2018-2019)

Active directions:

Russia:

- Simferopol (SIP)
- Sochi (AER)

Azerbaijan:

- Baku (GYD)

Belarus:

- Minsk (MSQ)

Georgia:

- Tbilisi (TBS)

Israel:

- Tel-Aviv (TLV)

Italy:

- Rome (FCO)

Kyrgyzstan:

- Bishkek (FRU)
- Osh (OSS)

Tajikistan:

- Dushanbe (DYU)
- Khujand (LBD)
- Kurgan-Tube (KQT)

Turkey:

- Istanbul (IST)
- Antalya (AYT)

China:

- Guangzhou (CAN)
- Xi'an (XIY)
- Fuzhou (FOC)
- Haikou (HAC)
- Jinan (TNA)

Planned for opening (2018-2019):

Russia:

- St. Petersburg
- Orenburg
- Tyumen
- Omsk
- Voronezh
- Novosibirsk

Belgium:

- Brussels

United Kingdom:

- London

Germany:

- Berlin
- Munich
- Frankfurt

Italy:

- Milan

China:

- Shuangliu
- Nanking
- Hangzhou
- Ningbo
- Taiyuan
- Changbei
- Xinzheng

Norway:

- Oslo

Finland:

- Helsinki

France:

- Paris

Czech Republic:

- Prague

Sweden:

- Stockholm

Partner airlines:

Belavia



pegas fly.com



AVIA TRAFFIC
COMPANY

Basic Freight Carrier:

cargo airlines

SKY GATES®

ADVANTAGES



The aviation industry requires the right mix of solutions to meet the needs of all business segments

In "ZIA CARGO" we try to provide each partner with the most comfortable conditions, ensuring an individual approach to joint work planning and a flexible tariff system

Advantages of partnership:



Support

Providing maximum support at all stages of partnership development. Support and advice in legal issues resolving, foreign economic activity and interaction with the regulatory authorities of the Russian Federation



Capabilities

The possibility of a significant expansion of the geography of flights is achieved due to the fixed status of the regional Airport and open quotas for commercial international destinations



Logistics

The location on the main transport highway "M5 Route Ural" and proximity to the largest industrial parks and logistic centers opens the possibility of building an effective logistical system



Intermodality

The favorable location at the intersection of traffic flows opens up promising opportunities for constructing an effective intermodal communication, including aviation, road, rail and river transport

CONTACTS

Joint-Stock Company

"ZHUKOVSKY INTERNATIONAL AIRPORT CARGO"

(JSC "ZIA CARGO")



Location:

140180, Moscow Region, Zhukovsky,
Narkomvod St., bld. 23



Mailing address:

140180, Moscow region, Zhukovsky,
PO Box 2204



8 (495) 228-96-26



www.ziac.aero



info@ziac.aero

